

**SHOCKWAVE
COMMANDER**
by Corbin

SHOCKWAVE

MARINE SUSPENSION SEATING



FEEL BETTER. TRAVEL FARTHER.

SHOCKWAVE

MARINE SUSPENSION SEATING



PROTECTING BOATERS FROM THE SHOCK OF WAVE IMPACT

SHOCKWAVE is a marine suspension company revolutionizing marine safety around the globe. We design, develop and manufacture our products in Canada using military grade materials to ensure that our clients – their families and the people who put trust in them – get home safely.

Since 2001, we have been designing marine suspension solutions to provide increased impact protection on the water. Our focus is on safety, comfort and accessibility, and we work with leading military and safety organizations to customize marine suspension solutions for their specific use. We work hard to offer boaters an experience they would never have imagined.

Being based on the North Pacific Ocean provides us the opportunity to do real-world testing in some of the most severe conditions on the planet – and we test constantly, putting our products through rigorous assessments that far exceed industry standards.

SHOCKWAVE Marine Suspension Seating is changing the way people think about marine safety and suspension, from recreational boaters to the US Navy SEALs, we develop the best suspension bases on the planet. The **SHOCKWAVE S5 Sentinel** brings our standard of safety to the recreational market.



SHOCKWAVE S5 SENTINEL

The **SHOCKWAVE S5 Sentinel** provides comfort and safety to boaters, offering them an experience they've never had before. It offers a smoother, safer and more comfortable ride, protecting occupants from the shock of wave impact. Recreational boaters can stay out longer and travel farther with less fatigue.

- ✓ Easy to install
- ✓ Can be paired with almost any seat
- ✓ Designed and manufactured in Canada

SHOCKWAVE S5 SENTINEL



S5 SENTINEL SUSPENSION BASE - BLACK
SW-07823-B

The SHOCKWAVE S5 Sentinel Suspension Base comes with a 4" travel FOX Float H2O air-sprung shock. It is easily and quickly installed in virtually any boat and can be mounted on a riser box or a short, stocky pedestal with minimal effort. The maximum occupant weight for the S5 Sentinel Suspension Base is 250lbs [113kgs] on a vessel that sees maximum deck accelerations of 3g's. For calm waters and deck of accelerations less than 2g's, a 300lb [136kg] occupant is acceptable.



BENEFITS

- ✓ Fully adjustable FOX FLOAT H2O shock absorber for all payloads and sea conditions
- ✓ Increased lateral stability
- ✓ Adjustable compression and rebound rate
- ✓ Minimal parts count and simple construction
- ✓ Designed and manufactured in Canada
- ✓ Improved performance and strength
- ✓ Surge protection: suspension travel is 4-inch vertical and 1.5-inch forward, mitigating deceleration associated with wave impacts

FEATURES

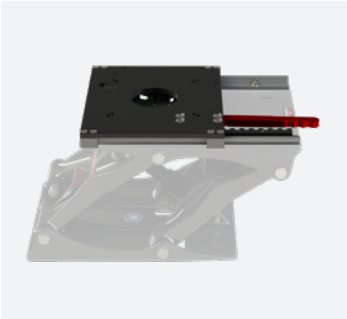
- ✓ Marine grade aluminum die cast construction with trivalent chromate and military grade powder coat
- ✓ 8 pivot design for higher loads, more stability and a smoother ride
- ✓ High life cycle IGUS bushings
- ✓ 316 stainless steel hardware
- ✓ Easy to mount and adapt to current seating

TRAVEL
4 IN 



S5 SENTINEL SUSPENSION BASE - WHITE
SW-07823-W

S5 SENTINEL ACCESSORIES



SLIDE

SW-05489

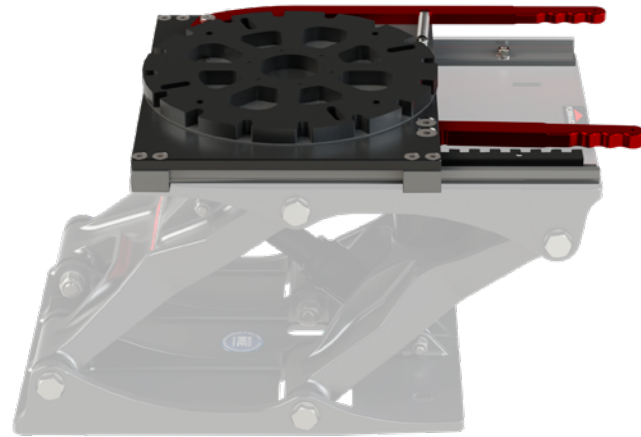
Our purpose-built Slide offers a full 5-inches of fore-aft travel, allowing for comfortable seating options for a wide variety of occupants and users. Our Slide pairs perfectly with the S5 Sentinel and the Commander Seat and offers a slim 1.5" profile.



SWIVEL

SW-05592

This robust 360-degree Swivel is designed to pair with the S5 Sentinel and the Commander Seat. A positive lock engages every 22.5° (16 positions).



SWIVEL SLIDE

SW-05488

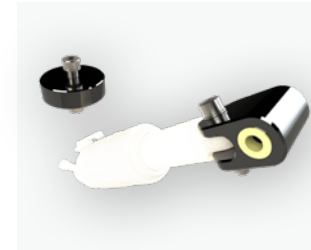
This Swivel Slide system has 5-inches of fore-aft travel and features premium igus track and cars for smooth operation. The 360-degree swivel has a positive lock that engages every 22.5° (16 positions).



SHOCK PUMP

SW-01983

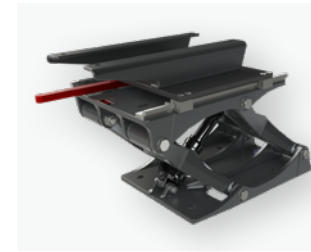
The high-pressure shock pump features an integrated pressure gauge and bleed valve for simple adjustment with a maximum inflation pressure of 350 psi. A **SHOCKWAVE** shock pump is required to operate the S5 Sentinel.



SHOCK EXTENDER KIT WITH REMOVAL TOOL

SW-08397-PKG

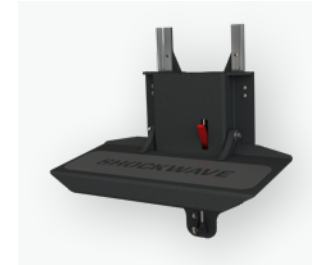
The S5 Sentinel Shock Extender Kit will allow you to raise your Suspension Base 1.5", which means that you can lift the height of the base from 8.5" to 10".



SEAT ADAPTER KIT

SW-08290

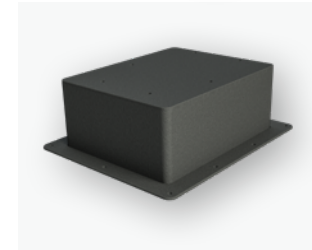
The Adapter Kit allows users with non-**SHOCKWAVE** brand seats that have a 5"x 12" bolt pattern to fit to **SHOCKWAVE** Swivels and Slides. The Adapter Kit accommodates both upward and downward bolt patterns.



FOOTREST

SW-07507

Our height adjustable Folding Footrest has 6" of vertical travel and is foot operated for ease of use. It offers a stable platform 17" wide and is designed to be bulkhead mounted on a console.



RISER BOXES

6" SW-07251 | 9" SW-07920

SHOCKWAVE offers Riser Boxes for customers needing additional height below their seat.



CUP HOLDER WITH ALUMINUM BRACKET

SW-01688

SHOCKWAVE offers an optional Cup Holder that can be attached to either side of the armrest of the Commander Seat.

COMMANDER SEATS

WHITE
SW-04920-W



BLACK
SW-04920-B

HEAVY DUTY
SW-04920-HD

COMMANDER SEAT - MID-BACK

Designed to pair perfectly with the S5 Sentinel Suspension Base, the Commander is a lightweight, robust boat seat that comes equipped with folding armrests, a storage pocket, machined aluminum seat frames, fiberglass seat backs, and Corbin cushions. Custom colors can be ordered.



HIGH-BACK
SW-06328-B

COMMANDER SEAT - HIGH-BACK

This seat is perfect for long days on the water when neck and head support is preferred.



COMMANDER HEATED SEAT

This mid-back seat offers heated back and base cushions, ensuring the occupant really feels the warmth. The cushions will heat up to a pleasant 98°F (38°C), ensuring a comfortable trip in the winter months and shoulder seasons in northern climates.

Each heated seat is supplied with a wiring harness and illuminated rocker switch to simplify installation. The cushions are connected to a 10' wiring harness using waterproof connectors which allows the switch to be mounted up to 10' away from the seat – such as on the helm console. The illuminated rocker switch provides a quick visual indicator that the seat is ON. Also, the cushions can be wired directly into an existing switch panel on your helm console or elsewhere. Each seat should be installed with its own switch, each requiring a minimum draw of 6 amps.



HEATED SEAT
SW-06987-B

S6 | SUSPENSION BASE

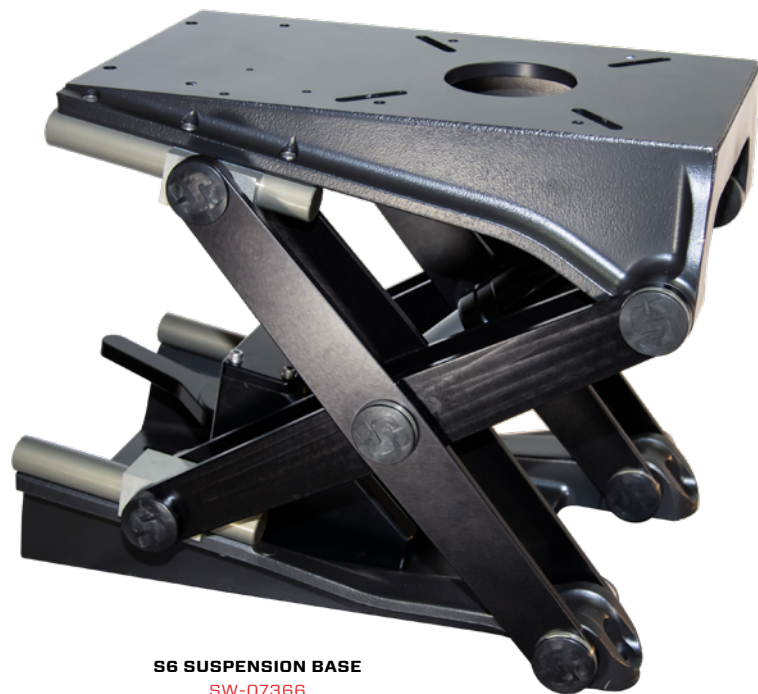


NEW

WITH 3" (75mm) HEIGHT ADJUST

The **SHOCKWAVE S6** Suspension Base with height adjust is designed for commercial applications, and built for the salt water marine environment. The suspension base is conveniently located underneath the seat, enhancing your comfort level by freeing up space. The height of the S6 Suspension Base is 11" (28cm) in its lowest and 14" (35.5cm) in its highest position.

The S6 is ideal for any vessel that regularly has people of varying heights operating in moderate to heavy seas, such as search and rescue, law enforcement, fisheries, government agencies and commercial boats.



S6 SUSPENSION BASE
SW-07366

TRAVEL
5.5" 



BENEFITS

- ✓ Pair with a **SHOCKWAVE** Seat or use an existing seat
- ✓ Integrated height adjust offers consistent suspension performance in all positions
- ✓ Easily combine S6 with the **SHOCKWAVE** Swivel, Slide, or Swivel/Slide
- ✓ Easy access to fill valve in all height positions

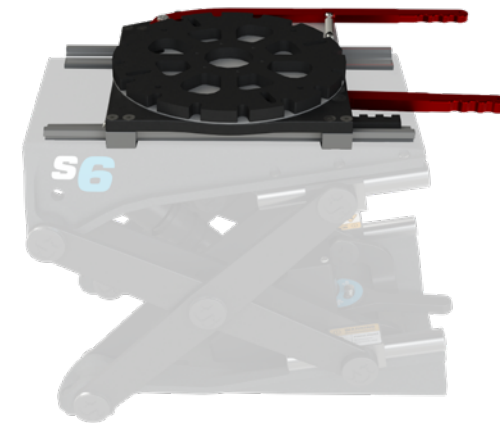
FEATURES

- ✓ Fully integrated height adjust raises the seat 3" (75mm)
- ✓ Custom tuned **SHOCKWAVE/FOX** Float3 5.5" shock absorber
- ✓ Designed for moderate to heavy sea conditions
- ✓ Can handle occupants up to 300lbs with deck accelerations up to 6g's
- ✓ Finished in black and engineered to eliminate corrosion points

S6 SWIVEL SLIDE

SW-07863

The S6 Swivel Slide system has 5-inches of fore-aft travel and features premium igus track and cars for smooth operation. The 360-degree swivel has a positive lock that engages every 22.5° (16 positions).



S6 SLIDE
SW-07867



S6 SWIVEL
SW-07865



SHOCK PUMP
SW-01983



ADJUSTABLE FOOTREST
SW-07507



SEATBELT
SW-07544



CUP HOLDER WITH ALUMINUM BRACKET
SW-01688

S5 JOCKEY SEAT



S5 JOCKEY
SW-S5-2400

The **SHOCKWAVE** S5 Jockey Seat offers an integrated suspension and seat frame to minimize weight. The FOX Float H2O air sprung shock features on-the-fly adjustments for firmness and rebound rate. Seats cushions made with closed cell foam and heavy-duty black fabric, well suited to commercial applications and heavy use. Designed for comfort and durability in outdoor and saltwater conditions. The S5 Jockey is one of our most compact solutions and is ideal for refits. This seat is shown with an optional front grab rail. It needs to be mounted to a riser box to provide the height needed for a comfortable ride. A riser box for this seat can be ordered from **SHOCKWAVE**.



SUPPORT AND SERVICE

Everyone at **SHOCKWAVE** Marine Suspension Seating is passionate about what we do, whether it's getting out on the ocean, manufacturing products, or providing exceptional customer service. We can help you troubleshoot through email or phone. We've created a series of how-to videos that can be accessed via our website. Real humans helping real people.

INTRODUCING S2 & S3

SHOCKWAVE has a broad product line for a range of applications and requirements. The **SHOCKWAVE S2** and the **SHOCKWAVE S3** provide marine suspension seating for the professional market. With several different options, including helm, jockey or drop-down seats, each seat allows for multiple configurations depending on what is required by the vessel. Manufactured in Canada with military-grade materials, the seats are designed with function in mind and can be easily removed, stowed, locked or repositioned to suit the mission profile.

S2 S3

TRAVEL
6 IN

TRAVEL
8 IN

ICE

TRAVEL
12 IN

INTEGRATED CONTROL ENVIRONMENT

The **SHOCKWAVE ICE** (Integrated Control Environment) Console is a patented solution that suspends occupants, controls and electronics inside a single unit. Designed and manufactured in Canada, the ICE Console is the only fully contained triple-axis marine suspension console on the market and is already in use with the Canadian Coast Guard, European Law Enforcement, the US Navy SEALs and several other elite marine organizations. Its triple-axis design provides protection from wave impact in all directions, protecting occupants and electronic equipment, and allowing them to travel at speed in extreme conditions.




MORE INFO SHOCKWAVESEATS.COM/PRO

MORE INFO SHOCKWAVESEATS.COM/ICE

SHOCKWAVE

MARINE SUSPENSION SEATING

**JOIN THE
SHOCKWAVE
COMMUNITY**

-  @shockwaveSeats
-  @shockwaveSeats
-  youtube.com/shockwaveSeats

*FIND A DEALER AND LEARN MORE ABOUT
OUR RECREATIONAL PRODUCTS ONLINE AT*
SHOCKWAVESEATS.COM/REC

SW-08130 REV02

