

**SHOCKWAVE  
COMMANDER**  
by Corbin

# SHOCKWAVE

MARINE SUSPENSION SEATING



FEEL BETTER. TRAVEL FARTHER.

# SHOCKWAVE

MARINE SUSPENSION SEATING



## PROTECTING BOATERS FROM THE SHOCK OF WAVE IMPACT

**SHOCKWAVE** is a marine suspension company revolutionizing marine safety around the globe. We design, develop and manufacture our products in Canada using military grade materials to ensure that our clients – their families and the people who put trust in them – get home safely.

Since 2001, we have been designing marine suspension solutions to provide increased impact protection on the water. Our focus is on safety, comfort and accessibility, and we work with leading military and safety organizations to customize marine suspension solutions for their specific use. We work hard to offer boaters an experience they would never have imagined.

Being based on the North Pacific Ocean provides us the opportunity to do real-world testing in some of the most severe conditions on the planet – and we test constantly, putting our products through rigorous assessments that far exceed industry standards.

**SHOCKWAVE** Marine Suspension Seating is changing the way people think about marine safety and suspension, from recreational boaters to the US Navy SEALs, we develop the best suspension bases on the planet. The **SHOCKWAVE S5 Sentinel** brings our standard of safety to the recreational market.



## SHOCKWAVE S5 SENTINEL

The **SHOCKWAVE S5 Sentinel** provides comfort and safety to boaters, offering them an experience they've never had before. It offers a smoother, safer and more comfortable ride, protecting occupants from the shock of wave impact. Recreational boaters can stay out longer and travel farther with less fatigue.

- ✓ Easy to install
- ✓ Can be paired with almost any seat
- ✓ Designed and manufactured in Canada

# SHOCKWAVE S5 SENTINEL



S5 SENTINEL SUSPENSION BASE - BLACK  
SW-07823-B

The SHOCKWAVE S5 Sentinel Suspension Base comes with a 4" travel SHOCKWAVE FOX Float H2O air-sprung shock. It is easily and quickly installed in virtually any boat and can be mounted on a riser box or a short, stocky pedestal with minimal effort. The maximum occupant weight for the S5 Sentinel Suspension Base is 250lbs [113kgs] on a vessel that sees maximum deck accelerations of 3g's. For calm waters and deck of accelerations less than 2g's, a 300lb [136kg] occupant is acceptable.



## BENEFITS

- ✓ Fully adjustable SHOCKWAVE FOX FLOAT H2O shock absorber for all payloads and sea conditions
- ✓ Increased lateral stability
- ✓ Adjustable compression and rebound rate
- ✓ Minimal parts count and simple construction
- ✓ Designed and manufactured in Canada
- ✓ Improved performance and strength
- ✓ Surge protection: suspension travel is 4-inch vertical and 1.5-inch forward, mitigating deceleration associated with wave impacts

## FEATURES

- ✓ Marine grade aluminum die cast construction with trivalent chromate and military grade powder coat
- ✓ 8 pivot design for higher loads, more stability and a smoother ride
- ✓ High life cycle IGUS bushings
- ✓ 316 stainless steel hardware
- ✓ Easy to mount and adapt to current seating

TRAVEL  
4 IN 



S5 SENTINEL SUSPENSION BASE - WHITE  
SW-07823-W

## S5 SENTINEL ACCESSORIES



### SLIDE

SW-05489

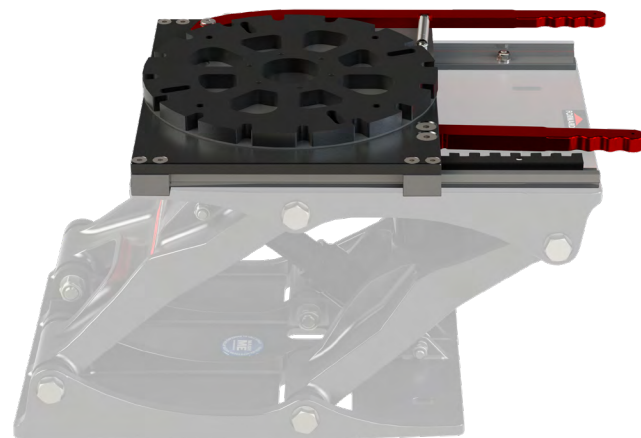
Our purpose-built Slide offers a full 5-inches of fore-aft travel, allowing for comfortable seating options for a wide variety of occupants and users. Our Slide pairs perfectly with the S5 Sentinel and the Commander Seat and offers a slim 1.5" profile.



### SWIVEL

SW-05592

This robust 360-degree Swivel is designed to pair with the S5 Sentinel and the Commander Seat. A positive lock engages every 22.5° (16 positions).



### SWIVEL SLIDE

SW-05488

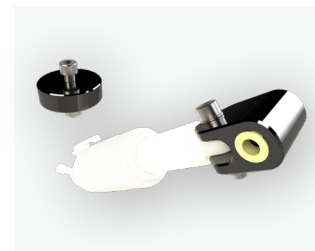
This Swivel Slide system has 5-inches of fore-aft travel and features premium igus track and cars for smooth operation. The 360-degree swivel has a positive lock that engages every 22.5° (16 positions).



### SHOCK PUMP

SW-01983

The high-pressure shock pump features an integrated pressure gauge and bleed valve for simple adjustment with a maximum inflation pressure of 350 psi. A **SHOCKWAVE** shock pump is required to operate the S5 Sentinel.



### SHOCK EXTENDER KIT WITH REMOVAL TOOL

SW-08397-PKG

The S5 Sentinel Shock Extender Kit will allow you to raise your Suspension Base 1.5", which means that you can lift the height of the base from 8.5" to 10".



### SEAT ADAPTER KIT

SW-08290

The Adapter Kit allows users with non-**SHOCKWAVE** brand seats that have a 5"x 12" bolt pattern to fit to **SHOCKWAVE** Swivels and Slides. The Adapter Kit accommodates both upward and downward bolt patterns.



### FOOTREST

SW-07507

Our height adjustable Folding Footrest has 6" of vertical travel and is foot operated for ease of use. It offers a stable platform 17" wide and is designed to be bulkhead mounted on a console.



### RISER BOXES

6" SW-07251 | 9" SW-07920

**SHOCKWAVE** offers Riser Boxes for customers needing additional height below their seat.



### CUP HOLDER WITH ALUMINUM BRACKET

SW-01688

**SHOCKWAVE** offers an optional Cup Holder that can be attached to either side of the armrest of the Commander Seat.

## COMMANDER SEATS

WHITE  
SW-04920-W



BLACK  
SW-04920-B

HEAVY DUTY  
SW-04920-HD



HIGH-BACK  
SW-06328-B



## COMMANDER SEAT - MID-BACK

Designed to pair perfectly with the S5 Sentinel Suspension Base, the Commander is a lightweight, robust boat seat that comes equipped with folding armrests, a storage pocket, machined aluminum seat frames, fiberglass seat backs, and Corbin cushions. Custom colors can be ordered.

## COMMANDER SEAT - HIGH-BACK

This seat is perfect for long days on the water when neck and head support is preferred.

## COMMANDER HEATED SEAT

This mid-back seat offers heated back and base cushions, ensuring the occupant really feels the warmth. The cushions will heat up to a pleasant 98°F (38°C), ensuring a comfortable trip in the winter months and shoulder seasons in northern climates.

Each heated seat is supplied with a wiring harness and illuminated rocker switch to simplify installation. The cushions are connected to a 10' wiring harness using waterproof connectors which allows the switch to be mounted up to 10' away from the seat – such as on the helm console. The illuminated rocker switch provides a quick visual indicator that the seat is ON. Also, the cushions can be wired directly into an existing switch panel on your helm console or elsewhere. Each seat should be installed with its own switch, each requiring a minimum draw of 6 amps.



HEATED SEAT  
SW-06987-B

## S5 JOCKEY SEAT



S5 JOCKEY  
SW-S5-2400

The **SHOCKWAVE S5 Jockey Seat** offers an integrated suspension and seat frame to minimize weight. The **SHOCKWAVE FOX Float H2O** air sprung shock features on-the-fly adjustments for firmness and rebound rate. Seats cushions made with closed cell foam and heavy-duty black fabric, well suited to commercial applications and heavy use. Designed for comfort and durability in outdoor and saltwater conditions. The S5 Jockey is one of our most compact solutions and is ideal for refits. This seat is shown with an optional front grab rail. It needs to be mounted to a riser box to provide the height needed for a comfortable ride. A riser box for this seat can be ordered from **SHOCKWAVE**.



## SUPPORT AND SERVICE

Everyone at **SHOCKWAVE Marine Suspension Seating** is passionate about what we do, whether it's getting out on the ocean, manufacturing products, or providing exceptional customer service. We can help you troubleshoot through email or phone. We've created a series of how-to videos that can be accessed via our website. Real humans helping real people.

@SHOCKWAVESEATS



# SHOCKWAVE

*MARINE SUSPENSION SEATING*



✉ [sales@shockwaveSeats.com](mailto:sales@shockwaveSeats.com)

☎ +1.778.426.8545

FIND A DEALER AND LEARN MORE ABOUT  
OUR RECREATIONAL PRODUCTS ONLINE AT

***SHOCKWAVESEATS.COM/REC***

SW-08130 REV02