

FEEL BETTER.
TRAVEL FARTHER.

SHOCKWAVE

MARINE SUSPENSION SEATING

Shockwave S5-LW Suspension Base

Black: SW-05026-B • White: SW-05026-W



The Shockwave S5-LW (lightweight) is our entry-level suspension base option best suited for fresh water or inside cabin usage in saltwater environments. It offers a smoother, safer and more comfortable ride, providing an experience you've never experienced before. The suspension base protects occupants from the shock of wave impact in light sea conditions, allowing recreational boaters to stay out longer and travel farther with less fatigue.



Easy to install and can be paired with almost any seat



4" [100mm] travel custom tuned and valved air spring shock



Designed and built in Canada

Spring and Shock	X-Fusion O2 R, Air Spring and Shock with Adjustable Rebound
Construction	Anodized 360 Cast Aluminum, 304 SS Hardware, Powder Coated
Suspension Design	3-Link Forward Action
Overall Performance	Good for Most Light Seas
Warranty	1 Year

Cabin Use	Yes
Outside Deck Use	Fresh Water or Inside Cabin Use, Limited Saltwater
Size	H: 8.6in [219mm] W: 12.0in [304mm] L: 18.5in [471mm]
Weight	20.5 lbs [9.3 kg]
Weight Capacity	Under 250 lbs [113.4 kg]

S5 Product Line Accessories

SHOCKWAVE

MARINE SUSPENSION SEATING

Shockwave Shock Pump

SW-01983-PKG

A shock pump is required to properly operate all Shockwave S5 suspension bases. The high-pressure Shockwave shock pump features a pressure gauge and bleed valve for simple adjustment.



- ✓ The S5 suspension base must be pressurized at install or it will not operate properly
- ✓ Factory pressure setting is approximately 100-150 psi
- ✓ The shock should be pressurized to match the weight (in pounds) of the occupant
- ✓ Use as needed, after install, to adjust shock pressure (psi) for a heavier or lighter person
- ✓ Maximum inflation pressure of 350 psi



Shockwave S5 Seat by Corbin

Black: SW-04920-B • White: SW-04920-W
Heavy-duty: SW-04920-HD



Swivel Slide

SW-05488



Slide

SW-05489



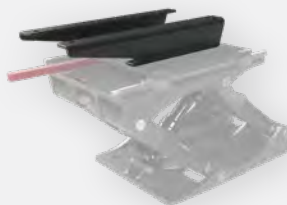
Swivel

SW-05592



**Bulkhead Mount
Adjustable Footrest**

SW-07507



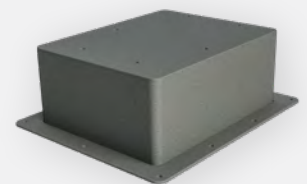
**15x12" [27x305mm]
Seat Adapter Kit**

SW-08290



**Cup Holder
with Aluminum Bracket**

SW-01688



Riser Boxes

6" [15cm]: SW-07251
9" [23cm]: SW-07920