

*FEEL BETTER.  
TRAVEL FARTHER.*

# ***SHOCKWAVE***

## ***MARINE SUSPENSION SEATING***



### **S5 Recreational Product Line**

---

**Marine Suspension Bases, Seats & Accessories for Recreational & Commercial Boaters**

# ***\$HOCKWAVE***

## *MARINE SUSPENSION SEATING*

### Protecting Boaters From the Shock of Wave Impact

Shockwave is a western Canadian company with a global presence. We design and manufacture marine suspension seats for professional and recreational markets. We have shipped thousands of suspension seats since 2001.

We design, develop and manufacture our products in Canada using premium quality materials and components to ensure that boaters are protected from the shock of wave impact. Our focus is on quality, safety, comfort and accessibility. We work hard to offer boaters an experience they would never have imagined.

Shockwave's products are changing the way people think about marine suspension. We bring top quality suspension products to leisure boaters with our recreational and professional suspension product lines.

For more information visit: [shockwaveSeats.com/rec](https://shockwaveSeats.com/rec)



Loki Boats; photo © Dolf Vermeulen



Gulf Craft Oryx 379

Originally founded in 1965 as 'Professional Components' based in Sidney, BC, Canada

Started building suspension for NASCAR in 1965, aiding with our marine product development to this day

In 2001, Shockwave is established and starts designing and manufacturing marine suspension seating for the US Military and Coast Guard

The business quickly evolves into designing products for military and other commercial applications worldwide

In 2016, Shockwave introduces the S5 recreational suspension base

In 2021, Shockwave introduces the S5 Sentinel recreational suspension base

In 2024, Shockwave introduces three different recreational suspension bases to cater to all boaters.



## Our Manufacturing Facility

The Shockwave plant is spread out over two acres located near Victoria, BC, Canada. We have over sixty employees and we manufacture all of our products on-site in our welding and fabrication shop, our powder coating and assembly shops. Our engineering department is on site and an integral part of everything we build here. Shockwave builds thousands of suspension bases and suspension seats every year at our plant and we deliver our products around the globe.



Powder Coating Shop & Ovens



Powder Coating



Product Storage & Inventory



Inventory Storage



Welding & Fabrication Shop



Welding



Rec Products Assembly Shop



Pro Products Assembly Shop

## Shockwave Manufacturing Partners

We focus on suspension and let our partners focus on what they do best. We work closely with:

- Corbin seats, based in California, supply our best-in-class seat cushions.
- FOX Shocks and FOX Defense, in California, custom valve & tune our specialized shocks.
- IGUS (Motion Plastics), in Germany, provide our high quality bushings, drylin™ linear bearings, rails and track systems for our seats and accessories.

Corbin



igus





## Shockwave S5 Marine Suspension Bases

The Shockwave S5 marine suspension product line offers a suspension base to suit every recreational boater's needs, no matter the application. Experience unmatched comfort and performance on the water with the perfect solution for any boat.



### S5-LW Suspension Base

The Shockwave S5-LW lightweight marine suspension base is our entry-level recreational suspension option. Designed to mitigate the shock of wave impact in light seas on fresh-water lakes or cabin boats on the ocean.



Black: SW-05026-B  
White: SW-05026-W

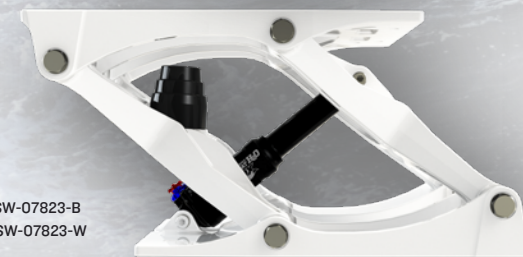


### S5-AL Suspension Base

The Shockwave S5-AL aluminum suspension base offers a smoother, safer, and more comfortable ride, protecting occupants from the shock of wave impact. It is designed for additional stability over the S5-LW in moderate to heavy sea conditions by utilizing a 4-point forward action suspension design.



Black: SW-07823-B  
White: SW-07823-W



### S5-SS Suspension Base

The new Shockwave S5-SS stainless steel suspension base is the latest addition to the S5 product line. Welded construction using electropolished 316 stainless steel to last a lifetime. The Shockwave S5-SS is best suited for saltwater environments with high salinity, humidity, and moderate to heavy sea conditions.



SW-09108



**NEW**



# Shockwave Shock Pump

SW-01983-PKG

A shock pump is required to properly operate all Shockwave S5 suspension bases. The high-pressure Shockwave shock pump features a pressure gauge and bleed valve for simple adjustment.

- ✓ The S5 suspension base must be pressurized at installation or it will not operate properly.
- ✓ Factory pressure setting is approximately 100-150 psi.
- ✓ The shock should be pressurized to match the weight (in pounds) of the occupant.
- ✓ Use as needed, after installation, to adjust shock pressure (psi) for a heavier or lighter person.
- ✓ Maximum inflation pressure of 350 psi.



S5-SS Suspension Base	
Spring and Shock	FOX Rhythm, Air Spring and Shock with Adjustable Rebound and Compression
Construction	Electropolished Welded 316 Stainless Steel
Suspension Design	4-Link Forward Action
Overall Performance	Best for Professional Mariner's Use in Heavy Seas
Warranty	5 Year – Limited Warranty
Cabin Use	Yes
Outside Deck Use	Best for Saltwater with High Salinity and Humidity
Size	H: 9.0in [229mm] W: 10.8in [274mm] L: 16.3in [414mm]
Weight	30.0 lbs [13.6 kg]
Weight Capacity	Up to 300 lbs [136.1 kg]



S5-AL Suspension Base	
Spring and Shock	FOX Rhythm, Air Spring and Shock with Adjustable Rebound
Construction	Anodized A360 Cast Aluminum, 316 SS Hardware, Powder Coated
Suspension Design	4-Link Forward Action
Overall Performance	Better in Moderate to Heavy Seas
Warranty	2 Year – Limited Warranty
Cabin Use	Yes
Outside Deck Use	Fresh Water or Cabin Use, Limited Saltwater
Size	H: 8.8in [224mm] W: 11.2in [283mm] L: 18.5in [471mm]
Weight	27.5 lbs [12.5 kg]
Weight Capacity	Up to 300 lbs [136.1 kg]



S5-LW Suspension Base	
Spring and Shock	X-Fusion 02 R, Air Spring and Shock with Adjustable Rebound
Construction	Anodized A360 Cast Aluminum, 304 SS Hardware, Powder Coated
Suspension Design	3-Link Forward Action
Overall Performance	Good for Most Light Seas
Warranty	1 Year
Cabin Use	Yes
Outside Deck Use	Fresh Water or Inside Cabin Use, Limited Saltwater
Size	H: 8.6in [219mm] W: 12.0in [304mm] L: 18.5in [471mm]
Weight	20.5 lbs [9.3 kg]
Weight Capacity	Under 250 lbs [113.4 kg]



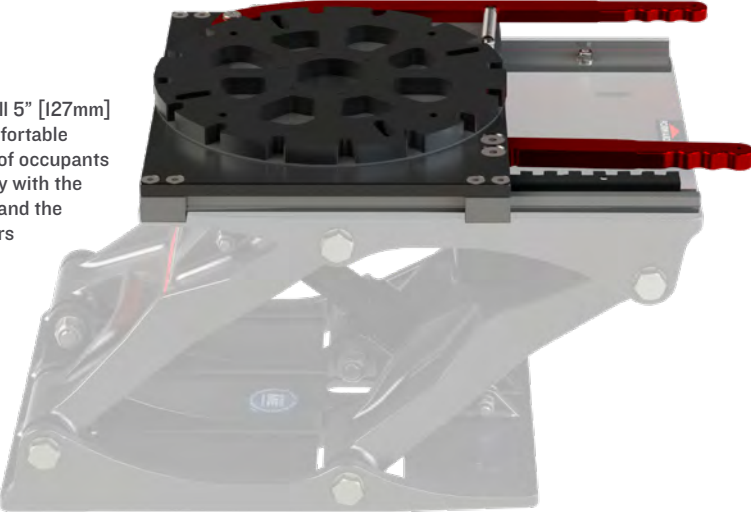
# Shockwave S5 Accessories



**Slide** SW-05489  
Our purpose-built slide offers a full 5" [127mm] of fore-aft travel, allowing for comfortable seating options for a wide variety of occupants and users. Our slide pairs perfectly with the Shockwave S5 suspension bases and the Shockwave S5 Corbin seat. It offers a slim 1.5" [38mm] profile.



**Swivel** SW-05592  
This robust 360-degree swivel is designed to pair with the Shockwave S5 suspension bases and the Shockwave S5 Corbin seat. A positive lock engages every 22.5° (16 positions).



**Swivel Slide** SW-05488  
This swivel slide system has 5" [127mm] of fore-aft travel and features premium igus track and cars for smooth operation. The 360-degree swivel has a positive lock that engages every 22.5° (16 positions).



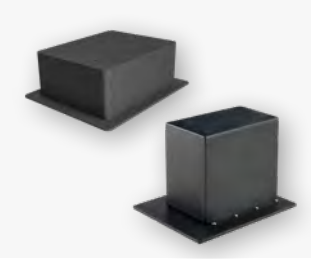
**Shock Pump** SW-01983-PKG  
A shock pump is required to operate all Shockwave S5 suspension bases. The high-pressure Shockwave shock pump features an integrated pressure gauge and bleed valve for simple adjustment with a maximum inflation pressure of 350 PSI.



**Bulkhead Mount Adjustable Footrest** SW-07507  
Our height adjustable folding footrest has 6" [15cm] of vertical travel and is foot operated for ease of use. It offers a stable platform 17" [43cm] wide and is designed to be bulkhead mounted on a console.



**Cup Holder with Aluminum Bracket** SW-01688  
Shockwave offers an optional cup holder that can be attached to either side of the armrest of the Shockwave S5 Corbin seat.



**Riser Boxes**  
6-inch: SW-07251  
9-inch: SW-07920  
Shockwave offers 6" [150mm] and 9" [230mm] riser boxes for customers needing additional height below their seat.



**Seat Adapter Kit** SW-08290  
The Adapter Kit allows users with non-Shockwave brand seats that have a 5x12" [127x305mm] bolt pattern to fit to Shockwave Swivels and Slides. The Adapter Kit accommodates both upward and downward bolt patterns.



**S5 Jockey Grab Rails**  
Front: SW-04732 • Rear: SW-05476  
Shockwave offers both a front and a rear grab rail for the S5 Jockey seat.

Find a dealer: [shockwaveseats.com/dealers](http://shockwaveseats.com/dealers)

More info: [shockwaveseats.com/rec](http://shockwaveseats.com/rec)

## Shockwave S5 Corbin Seats



### S5 Corbin Seat – Mid-back

Black: SW-04920-B • White: SW-04920-W • Heavy-duty: SW-04920-HD

Designed to pair perfectly with the Shockwave S5 suspension bases, the Shockwave S5 Seat is a lightweight, robust mid-back seat that comes equipped with folding armrests, a storage pocket, machined aluminum seat frames, fiberglass seat backs, closed-cell foam cushions and marine grade vinyl. Available in three standard fabrics and custom upholstery.



### S5 Jockey Suspension Seat

SW-S5-2400, Shown with optional front grab rail

The S5 Jockey is one of our most compact solutions and is ideal for refits and RHIBs. It offers solid performance in an affordable, lightweight and compact package. The S5 Jockey is outfitted with an integrated suspension and seat frame to minimize weight. Equipped with a 4-inch [100 mm] FOX Rhythm air sprung shock, it features on-the-fly adjustment for rebound rate.

- Designed for comfort and durability in outdoor and saltwater conditions.
- Seat cushions are made with closed cell foam and heavy-duty black fabric, well suited to recreational RHIB or commercial applications.
- Easy to install.
- Optional front & rear grab rails available.
- This seat needs to be mounted to a riser box to provide the height needed for a comfortable ride. Custom aluminum riser box can be special ordered.



## Support and Service

Everyone at Shockwave Marine Suspension Seating is passionate about what we do, whether it's getting out on the ocean, manufacturing products, helping customers choose the right product for their application, or providing exceptional customer service. We can help you troubleshoot through email or phone. Real humans helping real people.

Tidewater Boat - TPC 25





## Simulation & Real-World Testing

Shockwave sets the standard for marine suspension seating through our unwavering dedication to ongoing refinement. Rigorous testing on the water in the rugged Pacific Northwest, meticulous selection of locally-sourced materials, and the integration of custom valved and tuned shocks guarantee unparalleled quality.

✖ We use SolidWorks simulation software to analyze millions of variables that may cause stress on the components and parts of all our products.

★ We perform Drop Testing in-house to verify component strength and suspension performance.

✂ We break down all major components to validate and test them individually.

🚢 We test all our products on our test boat in the Northwest Pacific Ocean — in some of the most severe sea conditions on the planet.

🏁 We continue to participate in NASCAR racing to stay informed of new suspension technologies, which helps us with marine suspension seating development today.

More info [shockwaveSeats.com/about](https://shockwaveSeats.com/about)

## Military, Commercial, Recreational

We design and build our marine suspension products in Canada using premium quality military-grade components.

- Over 35 professional seat configurations and an expanding recreational product range.
- A huge variety of suspension seating systems customized for every application.
- Over 4,500 seats currently in service with US Coast Guard
- Rigorous testing on North Pacific Coast of Canada.
- Innovative, custom valved and tuned FOX shocks.



Loki Boats: photo © Dolf Vermeulen; Shockwave S3 seats at the helm and S5-AL suspension bases on the aft seat.



S2 Drop-Down Bulkhead Mount

S3 Drop-Down Bolster Seat

## Professional Suspension Seats for Demanding Recreational Applications

The Shockwave S2 and S3 seats provide marine suspension for military, commercial and recreational markets. With several different options, each seat allows for multiple configurations depending on what is required for your boat. The cushions are manufactured in the USA by Corbin and engineered to contribute to reducing shock and vibration.

- Available with 6" [152mm] or 8" [203mm] travel FOX shocks.
- Robust military-grade components.
- Multiple configurations and options.
- Custom fabric available.



@SHOCKWAVESEATS



# ***SHOCKWAVE***

*MARINE SUSPENSION SEATING*



[sales@shockwaveSeats.com](mailto:sales@shockwaveSeats.com)



+1.778.426.8545

FIND A DEALER AND LEARN MORE ABOUT  
OUR RECREATIONAL PRODUCTS ONLINE AT

***SHOCKWAVESEATS.COM/REC***