

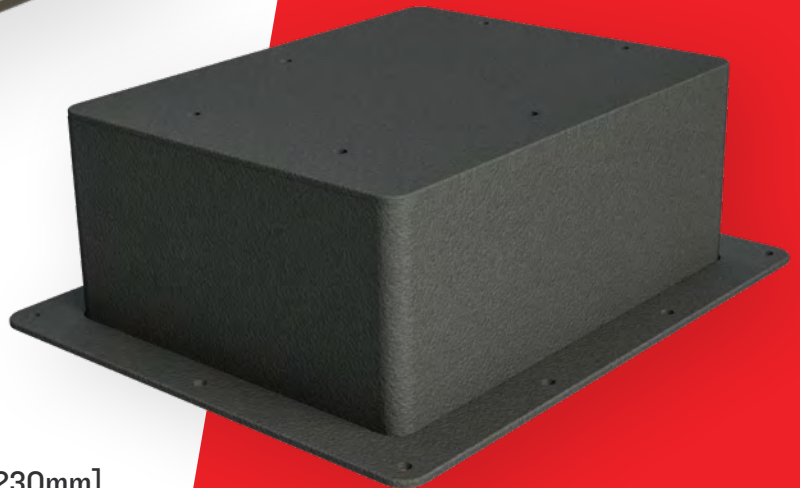
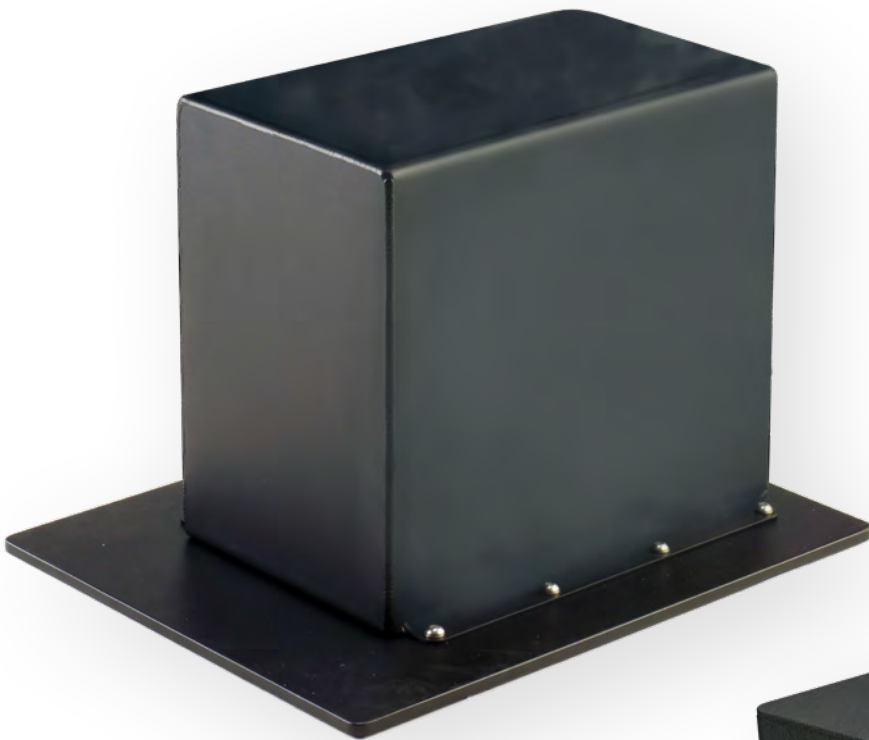
# **SHOCKWAVE**

# **S5**

## **S5** | **Riser Box**

6" [150mm] SW-0725I

9" [230mm] SW-07920

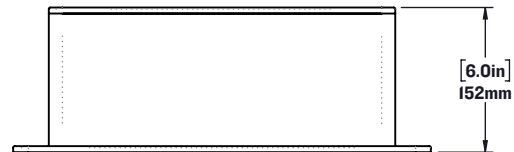
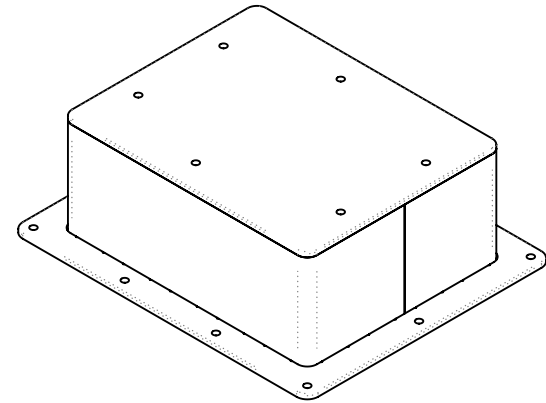
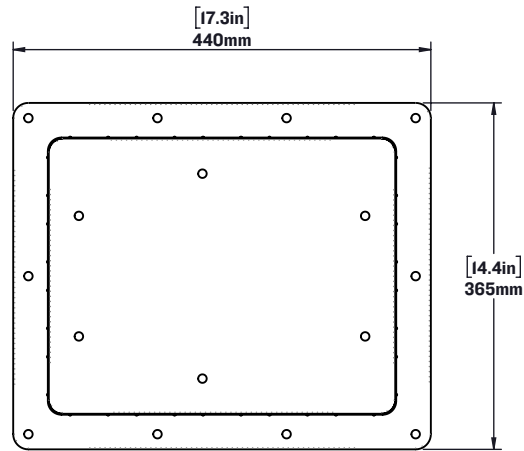


### **Shockwave Riser Boxes**

Shockwave offers custom built 6" [150mm] and 9" [230mm] riser boxes for customers needing additional height below their seat.

LEARN MORE ABOUT OUR PRODUCTS AT  
**SHOCKWAVESEATS.COM**

+1-778-426-8545  
[sales@shockwaveSeats.com](mailto:sales@shockwaveSeats.com)



**SHOCKWAVE**

FOR MORE INFORMATION  
CALL US AT 1-778-426-8545  
OR VISIT US ONLINE AT  
[WWW.SHOCKWAVESEATS.COM](http://WWW.SHOCKWAVESEATS.COM)

**PROPRIETARY AND CONFIDENTIAL**

NOTICE: THIS DRAWING MAY REVEAL DESIGNS OR INFORMATION  
PROPRIETARY TO PROFESSIONAL COMPONENTS LTD. BY  
ACCEPTANCE OF REPRODUCTIONS, RECIPIENTS AGREE  
TO PROTECT PROFESSIONAL COMPONENTS LTD. RIGHTS  
AND ARE WARNED AGAINST USE OF THE DOCUMENT FOR  
ANY PURPOSE OTHER THAN THAT FOR WHICH IT WAS ISSUED.

**SW-07251**

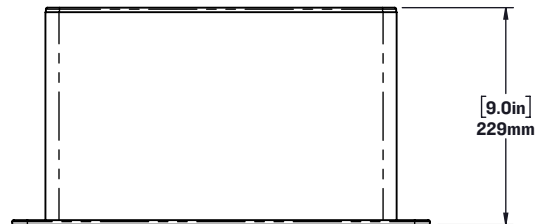
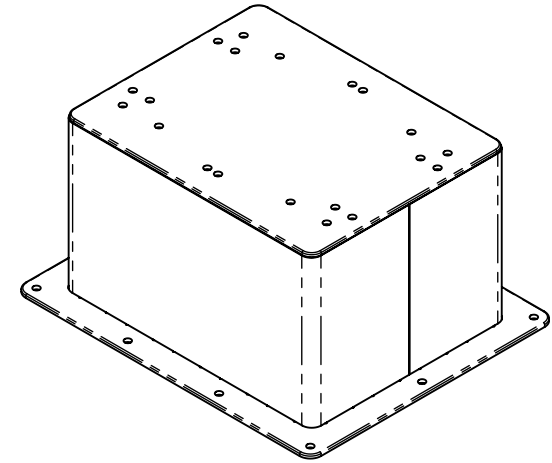
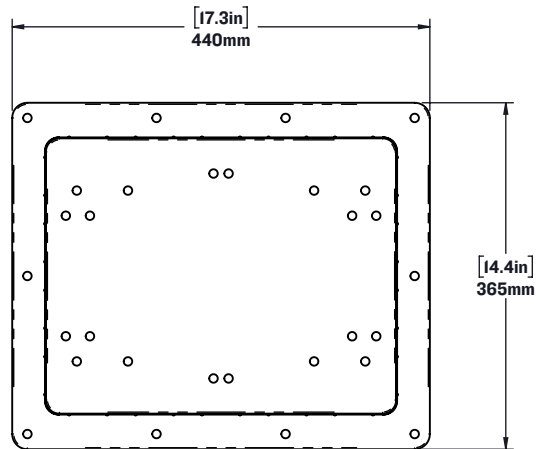
S5 6 inch Riser Box Weldment

WEIGHT: [11.1 lbs] 5.0 kg

SCALE:1:8

SHEET 1 OF 1

REV: 00



**SHOCKWAVE**

FOR MORE INFORMATION  
CALL US AT 1-778-426-8545  
OR VISIT US ONLINE AT  
[WWW.SHOCKWAVESEATS.COM](http://WWW.SHOCKWAVESEATS.COM)

**PROPRIETARY AND CONFIDENTIAL**

NOTICE: THIS DRAWING MAY REVEAL DESIGNS OR INFORMATION  
PROPRIETARY TO PROFESSIONAL COMPONENTS LTD. BY  
ACCEPTANCE OF REPRODUCTIONS, RECIPIENTS AGREE  
TO PROTECT PROFESSIONAL COMPONENTS LTD. RIGHTS  
AND ARE WARNED AGAINST USE OF THE DOCUMENT FOR  
ANY PURPOSE OTHER THAN THAT FOR WHICH IT WAS ISSUED.

**SW-07920**

S5 9 inch Riser Box Weldment

WEIGHT: (12.5 lbs) 5.7 kg

SCALE: 1:10

SHEET 3 OF 3

REV: 01