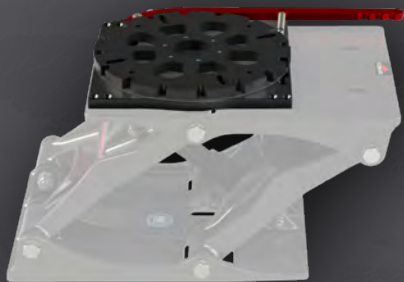


SHOCKWAVE

MARINE SUSPENSION SEATING

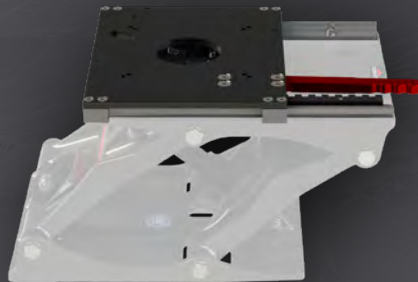
S5 | ***ACCESSORIES***

**User
Manual**



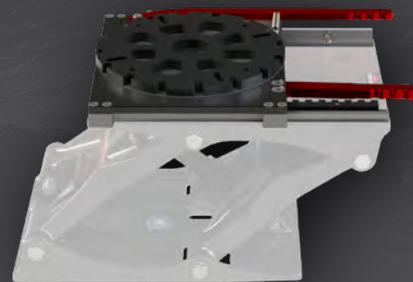
Shockwave Swivel

SW-05592



Shockwave Slide

SW-05489



Shockwave Swivel Slide

SW-05488

For all Shockwave SW-LW, SW-AL, SW-SS Suspension Bases

FEEL BETTER. TRAVEL FARTHER.

Customer Service

At Shockwave, we’ve proven that innovation and attention to the highest safety standards can protect boaters from the shock of wave impact. As avid boaters ourselves, we understand what our customers value most – and we create the best marine suspension seats in the world to provide a safer, more comfortable and exciting ride.

For customer inquiries and service support contact **+1.778.426.8544** or **support@shockwaveseats.com**

Serial Number:

Address

2074 Henry Ave. Sidney, BC
Canada V8L 5Y1

Website

shockwaveseats.com

Sales

+1.778.426.8545

Reception

+1.250.656.6165

Hours

8AM to 5PM PST

Accessories Parts List:

Swivel Slide (SW-05488)

- 1x SW-05675 – Swivel Shield
- 4x 5/16 x 7/8 – Countersunk Cap Screws (for Shockwave S5 Corbin Seat install)
- 1x SW-05493 – Lock Rack
- 2x SW-05492 – Square Rails
- 1x SW-05491 – Square Linear Bearing
- 1x Main Assembly
- 6 x M6x25 – Button Head Screws
- 4 x M6 Nut Nylock
- 10 x M6 Washers
- 6 x M6 Nylon Washers

Slide (SW-05489)

- 4x 5/16 x 5/8 – Countersunk Cap Screws (for Shockwave S5 Corbin seat install)
- 1x SW-05493 – Lock Rack
- 2x SW-05492 – Square Rails
- 1x SW-05491 – Square Linear Bearing
- 1x Main Assembly
- 6 x M6x25 – Button Head Screws
- 4 x M6 Nut Nylock
- 10 x M6 Washers
- 6 x M6 Nylon Washers

Torque Table:

FASTENER	TORQUE
M6x25mm	8Nm [70in-lbs]

Swivel (SW-05592)

- 1x SW-05675 – Swivel Shield
- 1x SW-06350 – Seat Swivel with Integrated Lock
- 4x 5/16 x 7/8 – Countersunk Cap Screws (for Shockwave S5 Corbin seat install)
- SW-LW and SW-AL Fastener Kit
- SW-SS Fastener Kit

Required Tools and Materials

- 4mm Allen Key
- 10mm wrench or socket
- Torque wrench (optional)
- Loctite 243 Medium Strength Thread Locker or equivalent

Fastener Kit Contents

S5-LW and S5-AL:

- 4 x 5./16 x 7/8
- 4 x 5/16 FW
- 4 x 5/16 Nylon Washer

S5-SS:

- 4 x 5./16 x 3/4
- 4 x 5/16 FW
- 4 x 5/16 Nylon Washer

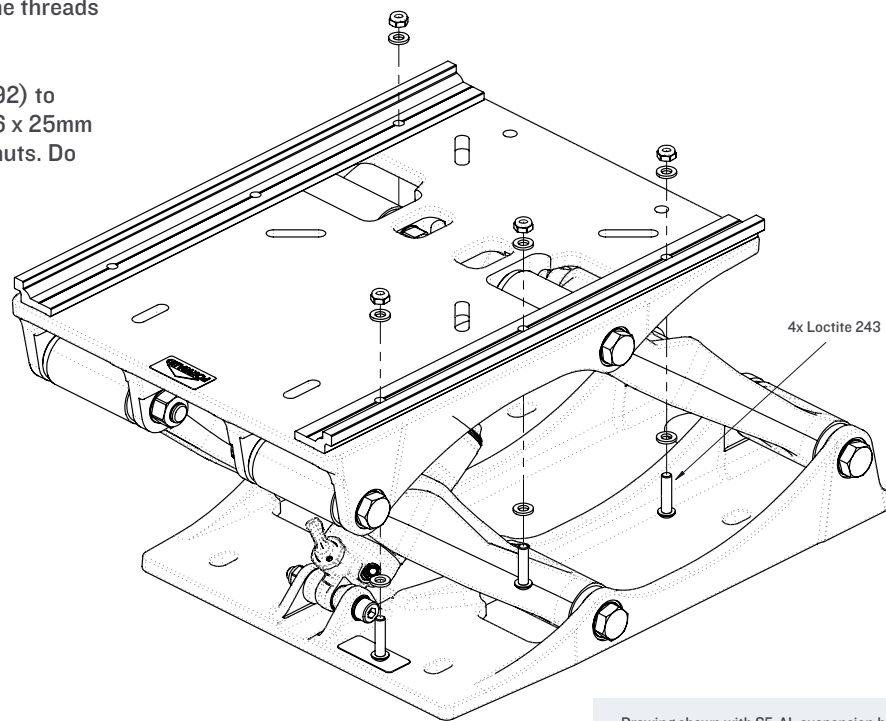
SHOCKWAVE
MARINE SUSPENSION SEATING

Installation Manual Contents

Slide (SW-05489) & Swivel Slide (SW-05488) Installation Instructions	4
Swivel (SW-05592) Installation Instructions	5
Warranty and Warranty Policy	6

Slide (SW-05489) & Swivel Slide (SW-05488) Installation Instructions

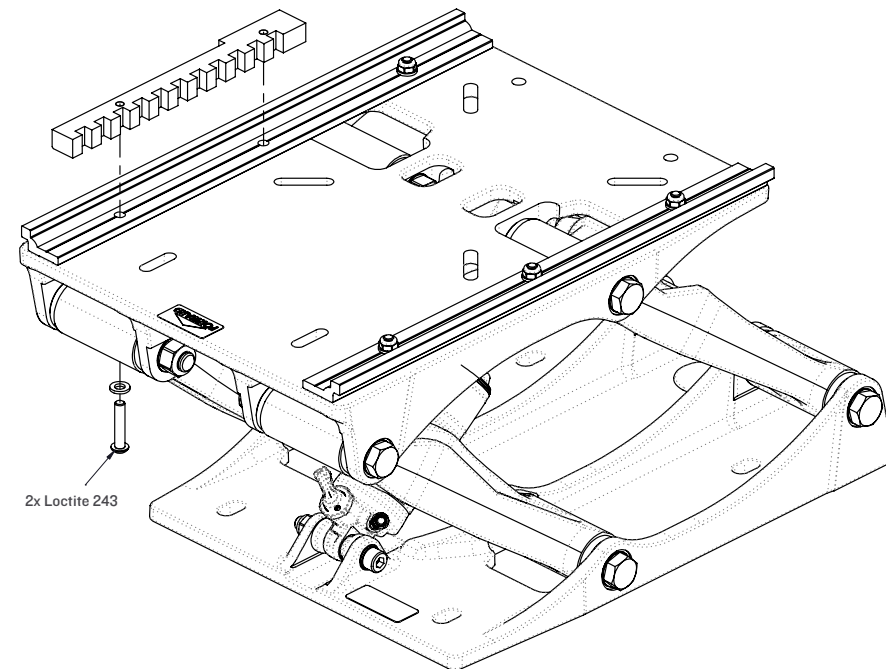
1. Apply Loctite 243 (purchased separately) to the threads of the 6 fasteners provided.
2. Loosely install the two Square Rails (SW-05492) to the top of the suspension module using the M6 x 25mm buttonhead cap screws, washers, and nylock nuts. Do not fully tighten the fasteners at this time.



Drawing shown with S5-AL suspension base.

Slide (SW-05489) & Swivel Slide (SW-05488) Installation Instructions — continued

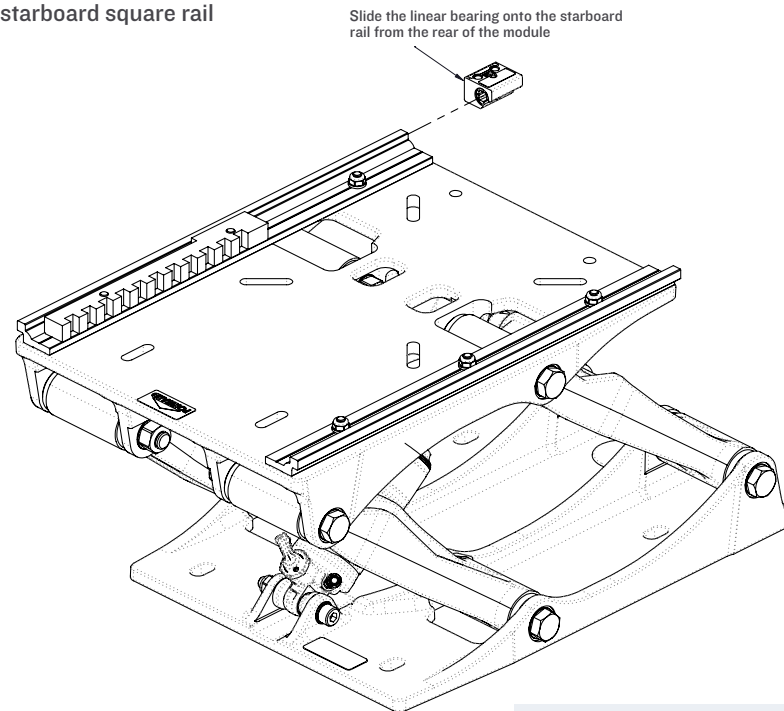
3. Loosely install the Lock Rack (SW-05493) on top of the starboard rail using the M6x25mm button head cap screws and washers. Do not fully tighten the fastener.



Drawing shown with S5-AL suspension base.

Slide (SW-05489) & Swivel Slide (SW-05488) Installation Instructions

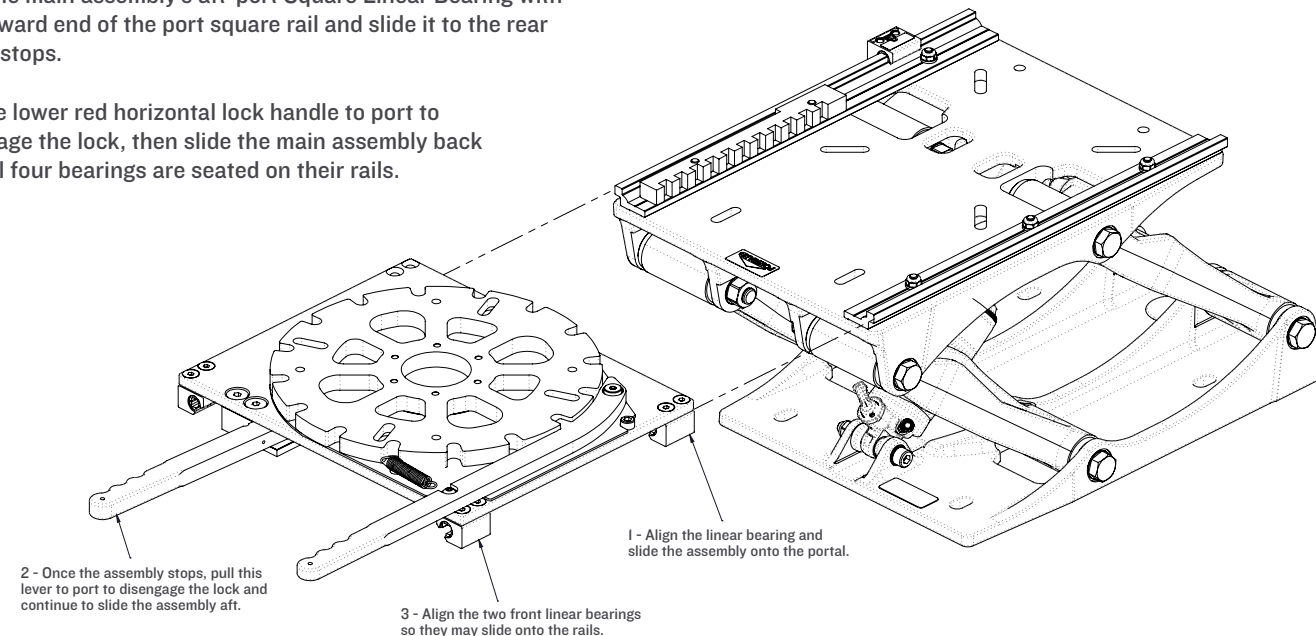
- Slide the Square Linear Bearing (SW-05491) onto the starboard square rail from the rear of the Shockwave suspension base.



Drawing shown with S5-AL suspension base.

Slide (SW-05489) & Swivel Slide (SW-05488) Installation Instructions — continued

- Align the main assembly's aft-port Square Linear Bearing with the forward end of the port square rail and slide it to the rear until it stops.
- Pull the lower red horizontal lock handle to port to disengage the lock, then slide the main assembly back until all four bearings are seated on their rails.



Drawing shown with S5-AL suspension base.

Slide (SW-05489) & Swivel Slide (SW-05488) Installation Instructions

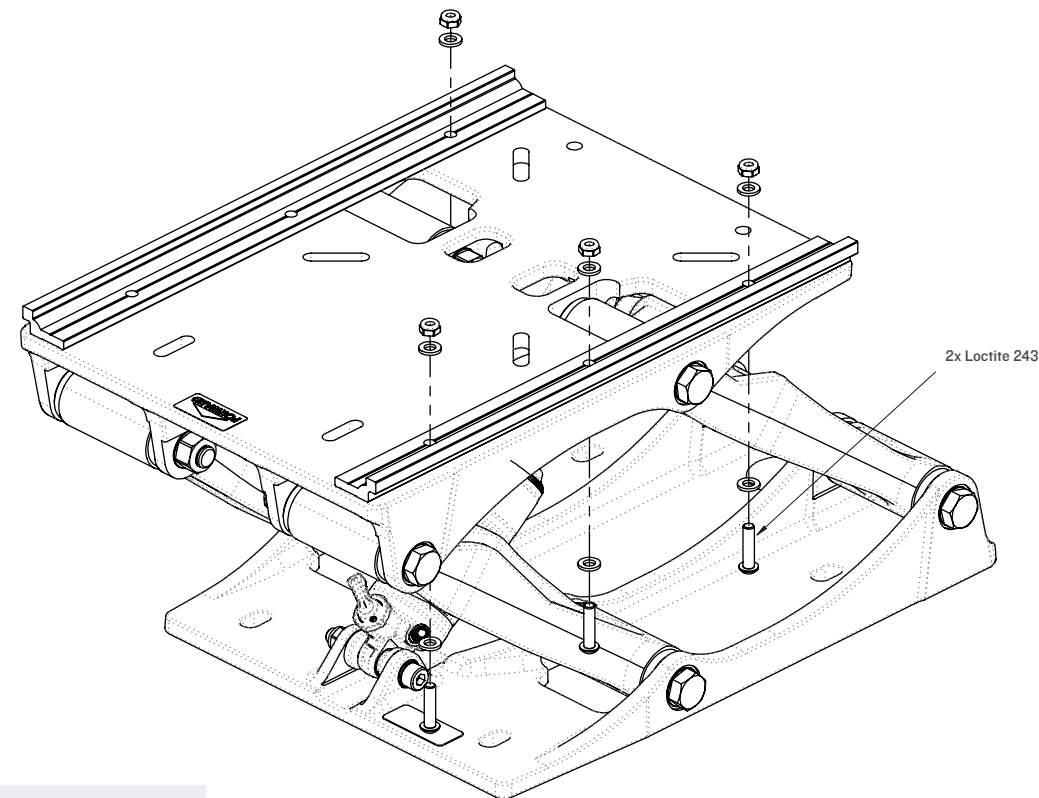
7. Secure the aft-starboard Square Linear Bearing (SW-0549I) to the main assembly with 2 – M6 x 25 flat head cap screws and Loctite 243 (sold separately). Tighten fasteners to 70in lbs max torque – do not over tighten.
8. Pull the lower red horizontal lock handle to port and slide the main assembly forward until the two rear fastener assemblies are visible. Tighten fasteners to 70in lbs max torque – do not over tighten.
9. Slide the main assembly all the way to the aft and tighten the remaining fasteners to 70in lbs max torque. Do not over tighten.
10. Once complete, the seat can be installed. If using Shockwave S5 Corbin seats, please refer to the S5 Corbin seat instructions which come with the S5 Corbin seat.



IMPORTANT

If installing Shockwave S5 Corbin seat, install the swivel shield in orientation shown (rounded edge facing forward) on page 10.

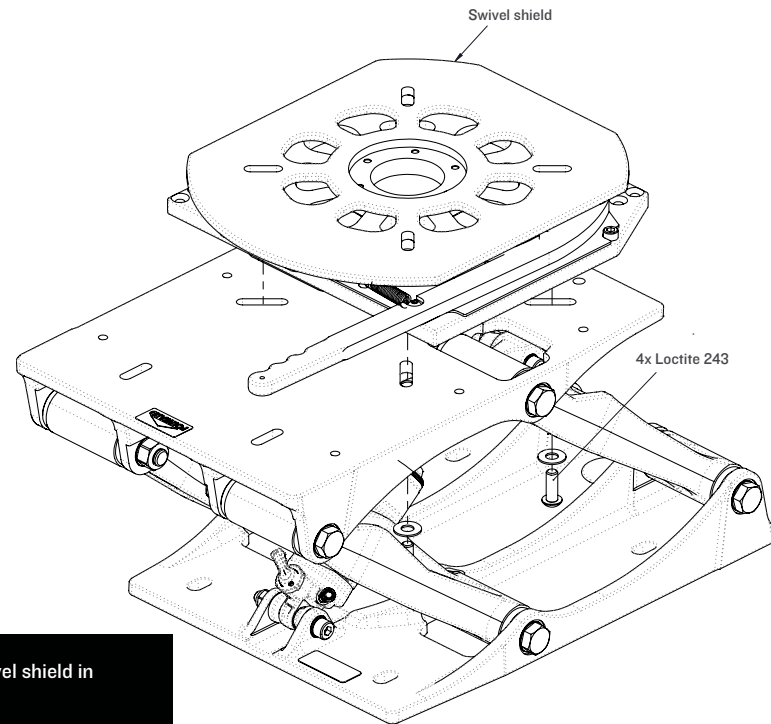
Slide (SW-05489) & Swivel Slide (SW-05488) Installation Instructions — continued



Drawing shown with S5-AL suspension base.

Swivel (SW-05592) Installation Instructions

1. Apply Loctite 243 (purchased separately) to the threads of the 8 fasteners provided.
2. Loosely install all fasteners.
3. Once all fasteners are installed tighten to 8nm [70in-lbs] - do not over tighten.



Drawing shown with S5-AL suspension base.

Warranty and Warranty Policy

Shockwave Seats expressly warrants that all mechanical seat components in its Marine Suspension Seats shall be free from defects in material and workmanship for the following time period from the date-of-sale, provided such seats are subject to normal use and receive proper maintenance:

- S5-LW Suspension Base – 1 year (base and shock)
- S5-AL Suspension Base – 2 years (1 year on shock)
- S5-SS Suspension Base – 5 years (1 year on shock)

Shockwave Seats expressly warrants that the cushions and seat covers shall be free from defectively sewn seams for a period of 90 days or 750 hours of use, whichever comes first, excluding normal wear and tear. Rips, tears, abrasions and installation damages are not covered by this warranty.

The Suspension Base powder coat finish is not covered by warranty if corrosion is a result of abuse or lack of maintenance. Suspension Bases must be cleaned with fresh water after every use.

Your sole and exclusive remedy against Shockwave Seats arising from the purchase or use of Marine Suspension Seats is limited to repair or replacement of defective materials or defective workmanship, after verification by Shockwave Seats. Defective product or materials may be requested for return by Shockwave Seats for inspection prior to issuing any replacements. Freight charges for returns are to be covered by the user.

All warranty claims shall have prior approval from Shockwave Seats warranty department and must be accompanied by the information requested on the following Claim Form. Products will be repaired or replaced at the sole discretion of Shockwave Seats.

These warranties will become null and void if:

- The seat is abused or altered
- The seat is involved in an accident
- The seat is improperly installed
- The seat is used for other than its intended use, contrary to any of the instructions in the manual provided
- There is damage to the cushions and covers caused by cuts, burns, or abuse

- There is damage to the seat caused during installation or unpacking
- There is damage to the structural integrity as a result of the user installing unapproved accessories
- Footrests are mounted directly to seat
- Occupant weight exceed 250lbs [113kgs] for 3g deck accelerations. For calm waters and deck of accelerations less then 2g, a 300lb [136kg] occupant is acceptable
- Damage results from incorrect installation of Shockwave accessories

Warranty Disclaimers and Limitations of Liability

The above expressed warranties shall be the exclusive warranties, and shockwave seats makes no other warranties, expressed or implied. Shockwave Seats expressly disclaims and implied warranties of merchantability and implied warranties of fitness for a particular purpose.

It is agreed that Shockwave Seats shall not be liable for incidental or consequential damages, including, but not limited to, loss of income, loss of use, lost profits, damage to other property, the cost of removing and reinstalling Marine Suspension Seats, attorney's fees, and any liability you may have with respect to any other person.

Time Limit on Commencing Legal Action

It is agreed that you have one year from the accrual of a claim to commence any legal action arising from the purchase or use of the Marine Suspension Seats. Failure to give prompt written notice within ten (10) days of the discovery of any defect in material or workmanship that occurs within the warranty period will void the warranty. Send notification to:

Shockwave Seats Warranty Department

2074 Henry Avenue West, Sidney, BC, V8L 1T2, Canada

✉ support@shockwaveseats.com ☎ +1.778.426.8544

Warranty Claim Form Must Be Submitted

Download your Warranty Claim Form at shockwaveseats.com/warranty



IMPORTANT

If installing Shockwave S5 Corbin Seat, install the swivel shield in orientation shown (rounded edge facing forward).

*FEEL BETTER.
TRAVEL FARTHER.*

    @shockwavesseats


SHOCKWAVE

MARINE SUSPENSION SEATING



 www.shockwavesseats.com

 sales@shockwavesseats.com

 +1.778.426.8545